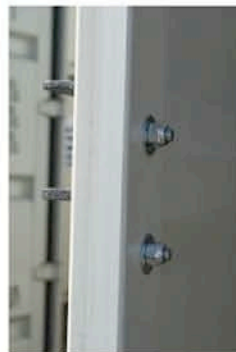


Insta Lock Boxes (3233 & 3240) Instalation Guide



*Products may not be exactly as shown

- ① Center the Drill Template over the closed container door, at the desired height. Using the felt pen, mark the four drill points onto the container.
- ② Carefully drill out the four points. Make sure to drill a pilot hole using the 1/4" drill bit. **Caution, drill slowly!** Use a slow RPM to prevent damaging the drill bit and overheating and hardening the steel.
- ③ Insert carriage bolts in slots of lock box.
- ④ Position the **right Lock Box Component** through the drilled holes. Secure with nuts and washers.
- ⑤ Using the supplied bolts and washers, secure the **left Lock Box Component** through the left side drilled holes.

Attach the padlock. Your container is now secure!